

VÁLVULA DE DIAFRAGMA CEPEX
CEPEX DIAPHRAGM VALVE

SEGURIDAD Y CONTROL
SAFETY & CONTROL

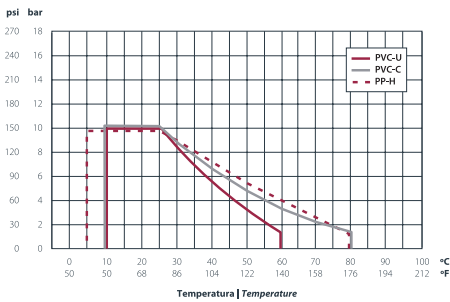


CARACTERÍSTICAS TÉCNICAS Y GAMA TECHNICAL FEATURES AND RANGE

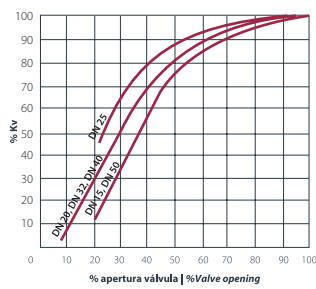
- ➔ **Medidas | Measures:**
D20 (DN15) > D63 (DN50)
- ➔ **Presión nominal | Nominal pressure:**
PN10 / 20°C (150 psi / 73°F)
- ➔ **Standards:**
DIN (metric / BSP)
ANSI (ASTM / NPT)
SDR11 > PE100
- ➔ **Material cuerpo | Body material:**
PVC-U / CPVC **CORZAN** / PP-H
- ➔ **Material membrana | Diaphragm material:**
EPDM (indicador visual azul)
EPDM (blue visual indicator)
FPM (indicador visual verde)
FPM (green visual indicator)

- ➔ **Certificado CE | CE Certificate:**
EN ISO 16138
- ➔ **Uniones | Unions:**
3 piezas encolar hembra
Female solvent socket
3 piezas roscar hembra
Female threaded socket
Encolar macho
Male solvent socket
3 piezas termofusión
Fusion socket
Bridas
Flanges
Soldadura a tope y electrofusión
Butt welding and electrofusion

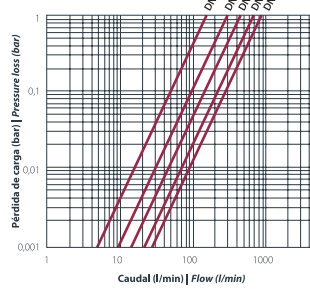
**Presión vs. temperatura
Pressure vs. temperature**



**Flujo relativo
Relative flow**



**Pérdida de presión
Pressure loss**



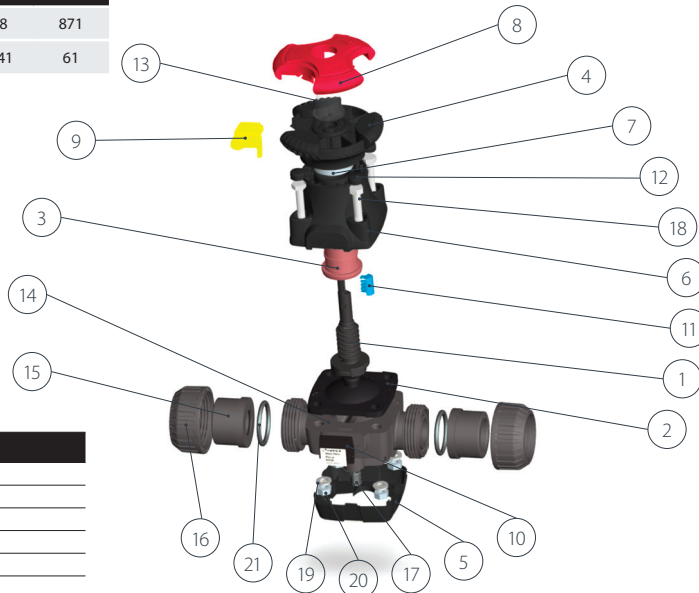
**RELATIVE FLOW
FLUJO RELATIVO**

| D | 20-1/2" | 25-3/4" | 32-1" | 40-1 1/4" | 50-1 1/2" | 63-2" |
|-------------------|---------|---------|-------|-----------|-----------|-------|
| DN | 15 | 20 | 25 | 32 | 40 | 50 |
| Kv ₁₀₀ | 155 | 158 | 292 | 454 | 648 | 871 |
| Cv | 10,85 | 11,06 | 20,45 | 31,76 | 45,41 | 61 |

$Cv = Kv_{100} / 14,28$
 Kv_{100} (l/min, $\Delta p = 1$ bar)
 Cv (GPM, $\Delta p = 1$ psi)

DESPIECE | EXPLODE

| Description | Material |
|--|------------------------------------|
| 1 Eje / Stem | PPO+GF |
| 2 Diafragma / Diaphragm | EPDM / FPM |
| 3 Guía / Guide | POM |
| 4 Volante / Handwheel | PP+GF |
| 5 Tapa inferior / Lower cover | PP |
| 6 Tapa / Cover | PP+GF |
| 7 Arandela / Washer | POM |
| 8 Tapón superior / Top cover | PP |
| 9 Seguro / Safety lock | PP+GF |
| 10 Porta-etiqueta / Label holder | ABS |
| 11 Indicador / Indicator | PP |
| 12 Tapón tornillo / Screw cap | PP |
| 13 Tapón indicador / Indicator cap | PC |
| 14 Cuerpo / Body | PVC-U / CORZAN® CPVC / PP |
| 15 Manguito / End connector | PVC-U / CORZAN® CPVC / PP |
| 16 Tuerca / Union nut | PVC-U / CORZAN® CPVC / PP |
| 17 Inserto / Insert | Acero inoxidable / Stainless steel |
| 18 Tornillo DIN 931 / DIN 931 screw | Acero inoxidable / Stainless steel |
| 19 Arandela grower DIN 127 / DIN 127 groyer washer | Acero inoxidable / Stainless steel |
| 20 Tuerca DIN 934 / DIN 934 nut | Acero inoxidable / Stainless steel |
| 21 Junta tórica / O-ring | EPDM / FPM |



Más características

- Marcado láser
- Trazabilidad 100 %: número de serie y de lote
- 100 % testadas en banco de presión con agua.

More features:

- Laser marking
- 100 % traceability: serial and batch number
- 100 % valves tested in water pressure test bench.

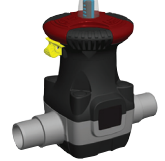
Manguito encolar hembra Female solvent socket PVC-U | CPVC



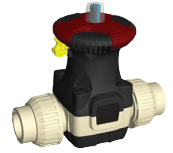
Manguito roscar hembra Female threaded socket PVC-U | CPVC | PP-H



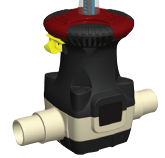
Encolar macho Male solvent PVC-U | CPVC



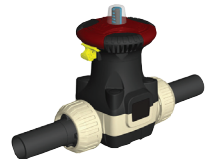
Manguito termofusión hembra Female fusion socket PP-H



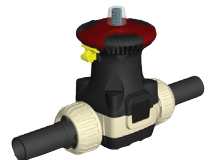
Termofusión macho Male fusion PP-H



Soldadura a tope SDR11 Butt welding SDR11 PP-H | PE100



Manguito electrosoldable Electrofusion socket PE100



Con bridas With flanges PVC-U | CPVC | PP-H

